

**ASHEBORO CITY BOARD OF EDUCATION**

**March 26, 2012**

**7:00 p.m.**

**Professional Development Center**

**I. Opening**

A. Call to Order

**II. Action Items**

\*A. Early Childhood Development Center Project

**III. Information, Reports, and Recommendations**

A. 2012 – 2013 Budget Presentation

B. 2012 – 2013 Calendar Update

**IV. Adjournment**



# **ASHEBORO CITY SCHOOLS**

## **Budget Work Session**

**2012 - 2013**

**Asheboro City**

**Board of Education**

**March 26, 2012**



**Asheboro City Schools**  
**2012 - 2013 Budget Information**  
**Budget Accomplishments for 2011 - 2012**

**Asheboro City Schools will produce globally competitive students.**

**Graduation coach**  
**Science coach**  
**Secondary literacy coach**  
**Technology for grades 4-8**

**Asheboro City Schools will be led by 21st century professionals.**

**Professional development - NC Common Core/Essential Standards**



**Asheboro City Schools**  
**2012 - 2013 Budget Information**  
**Budget Accomplishments for 2011 - 2012**

**Asheboro City Schools facilities will be a point of pride.**

***Asheboro High School***

**Softball field upgrades:**

**Restroom and concessions, bleacher replacement, and light poles**

**Energy upgrades**

**9th grade academy and second floor paint and replace furniture**

***South Asheboro Middle School***

**Energy upgrades**

***Balfour Elementary School***

**HVAC upgrades**

**Energy upgrades**

**Mondo floor in multipurpose room**

***Guy B. Teachey Elementary School***

**Roof project**

***Lindley Park Elementary School***

**Blinds for the media center**

***North Asheboro Middle School***

**Carpet media center**

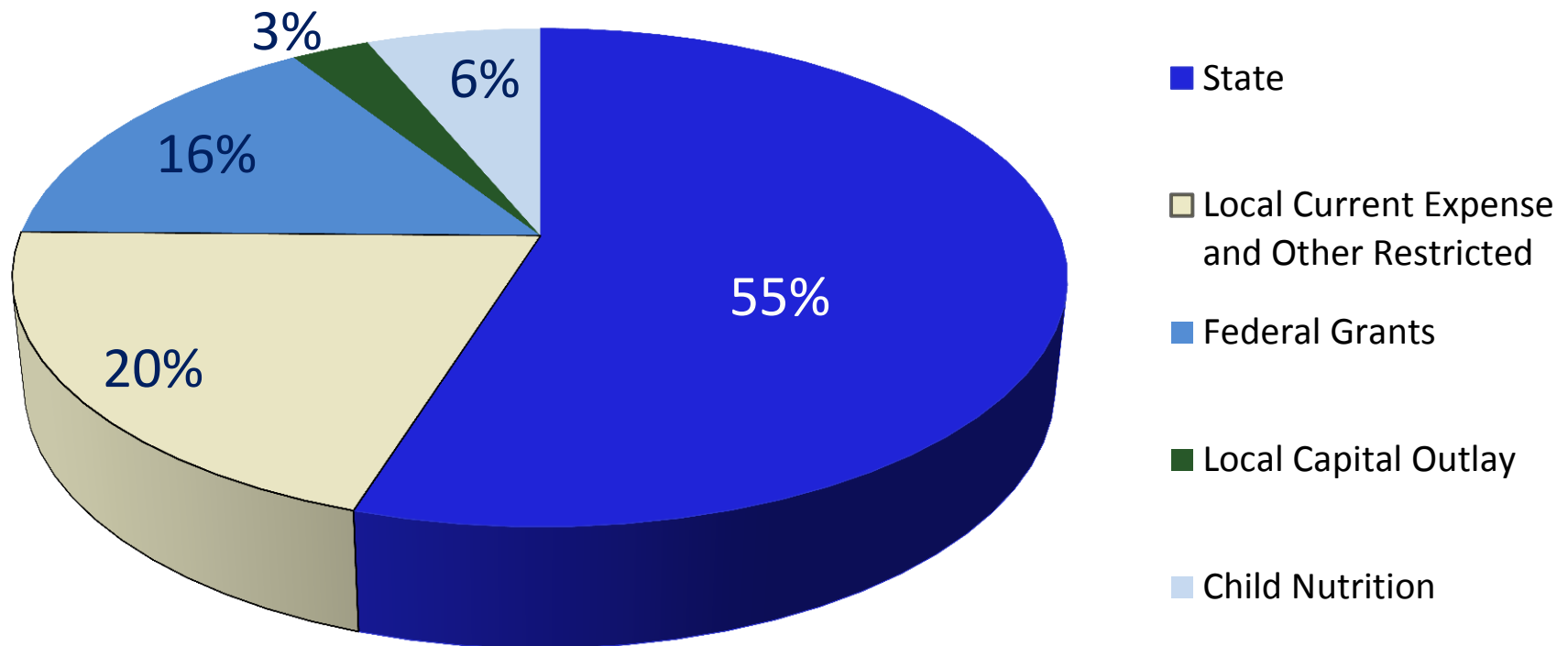
**Energy upgrades**

**Paving**



## Asheboro City Schools 2012 - 2013 Budget Information 2011-12 Budget by Fund

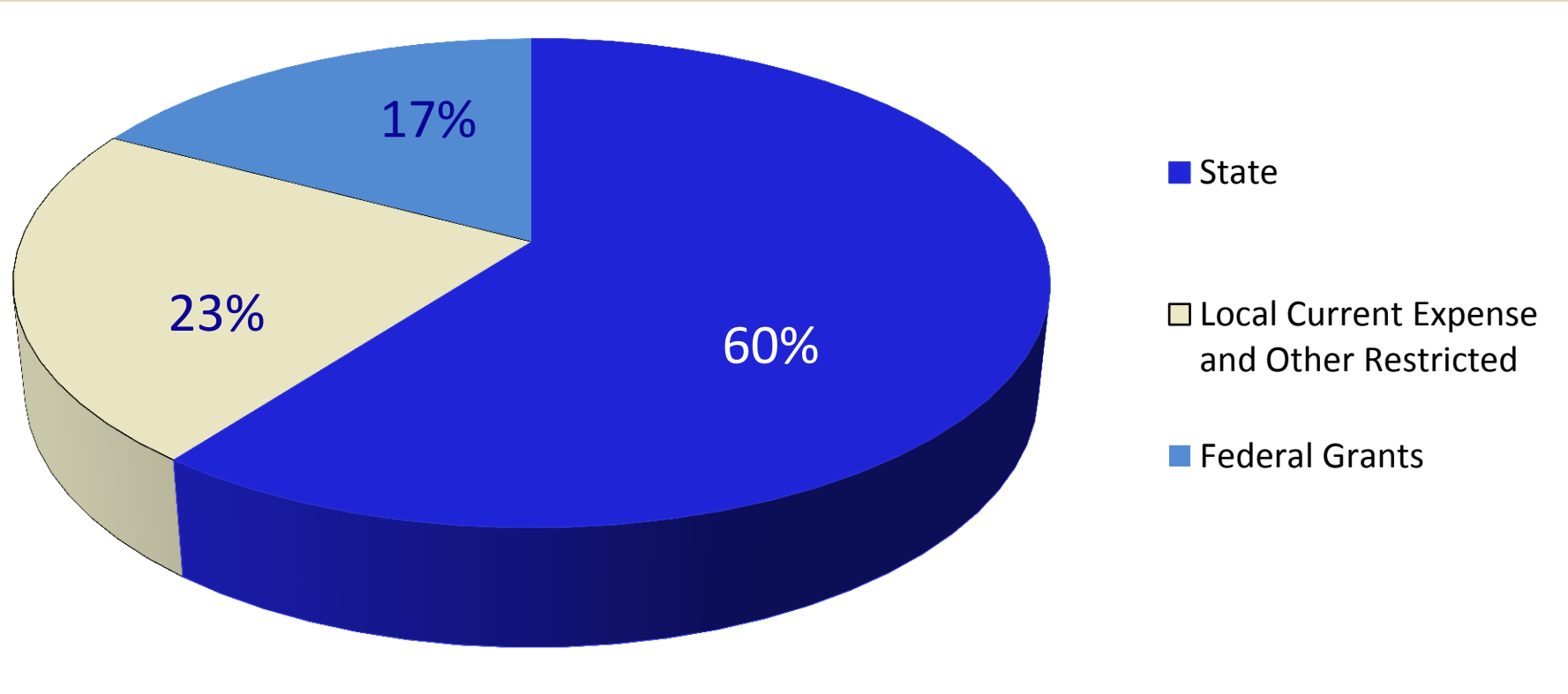
|  |                             |
|--|-----------------------------|
| State                                      | \$ 25,862,000               |
| Local Current Expense and Other Restricted | \$ 9,600,000                |
| Federal Grants                             | \$ 7,374,000                |
| Local Capital Outlay                       | \$ 1,333,000                |
| Child Nutrition                            | \$ 2,961,000                |
| <b>Total</b>                               | <b><u>\$ 47,130,000</u></b> |





**Asheboro City Schools**  
**2012 - 2013 Budget Information**  
**Current Budget by Fund**  
(Excluding Capital Outlay and Child Nutrition)

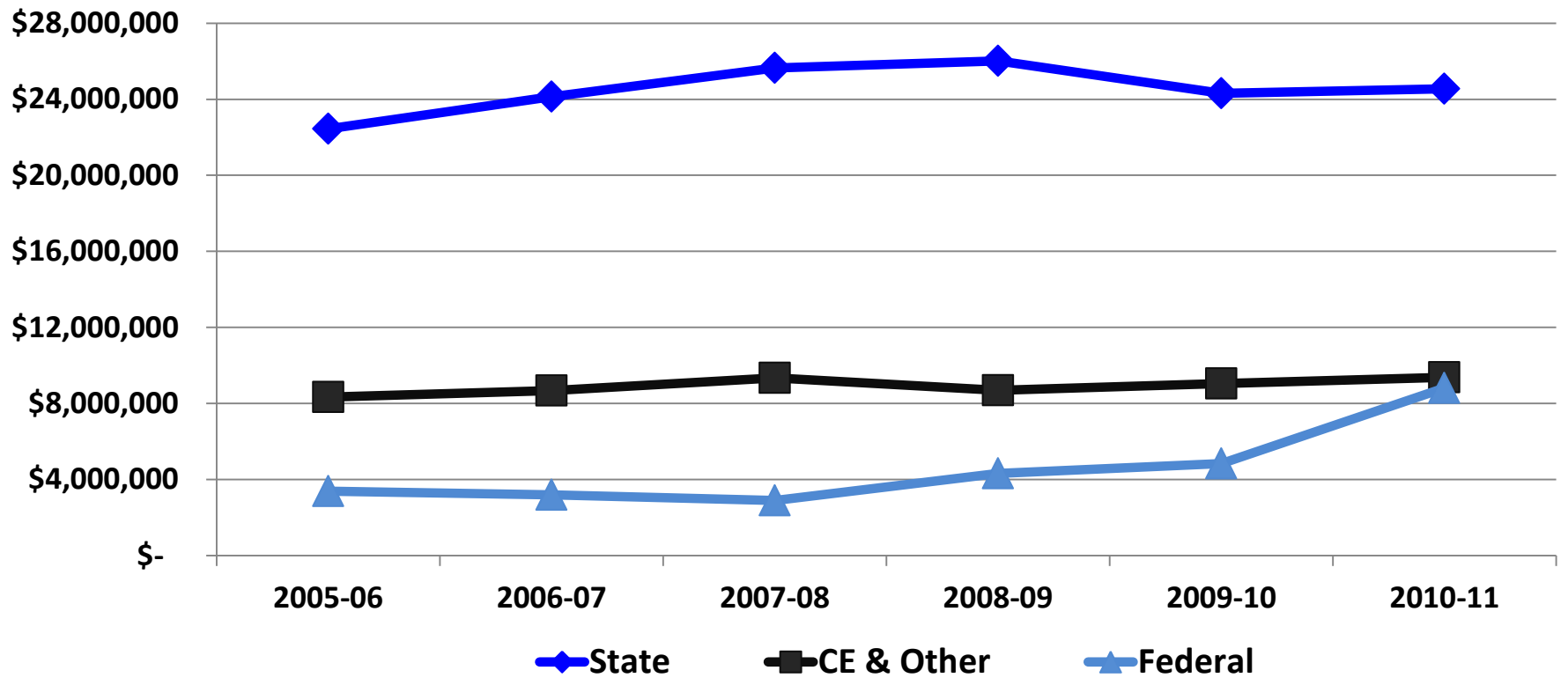
|  |               |
|--|---------------|
| State                                      | \$ 25,862,000 |
| Local Current Expense and Other Restricted | \$ 9,600,000  |
| Federal Grants                             | \$ 7,374,000  |
|  | \$ 42,836,000 |





## Asheboro City Schools 2012 - 2013 Budget Information Expenditures by Fund (Excluding Capital Outlay & Child Nutrition)

|                       | 2005-06              | 2006-07              | 2007-08              | 2008-09              | 2009-10              | 2010-11              |
|-----------------------|----------------------|----------------------|----------------------|----------------------|----------------------|----------------------|
| <b>State</b>          | \$ 22,450,000        | \$ 24,134,000        | \$ 25,652,000        | \$ 26,014,000        | \$ 24,310,000        | \$ 24,552,000        |
| <b>CE &amp; Other</b> | \$ 8,337,000         | \$ 8,670,000         | \$ 9,337,000         | \$ 8,687,000         | \$ 9,044,000         | \$ 9,376,000         |
| <b>Federal</b>        | \$ 3,377,000         | \$ 3,184,000         | \$ 2,885,000         | \$ 4,319,000         | \$ 4,838,000         | \$ 8,809,000         |
|                       | <b>\$ 34,164,000</b> | <b>\$ 35,988,000</b> | <b>\$ 37,874,000</b> | <b>\$ 39,020,000</b> | <b>\$ 38,192,000</b> | <b>\$ 42,737,000</b> |





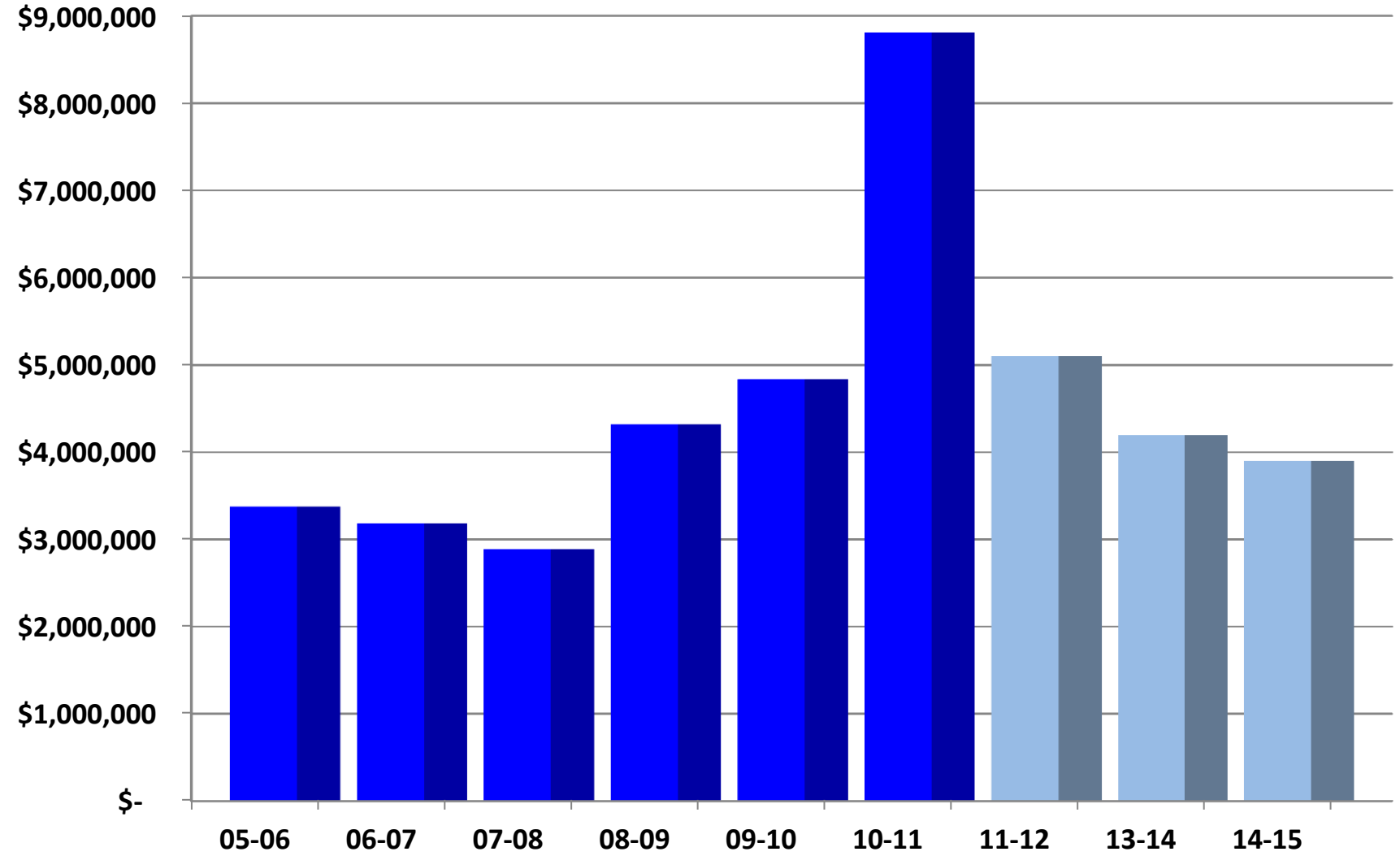
**Asheboro City Schools**  
**2012 - 2013 Budget Information**  
**Expenditures by Fund**  
**(Excluding Capital Outlay & Child Nutrition)**

|                       | <b>2005-06</b> | <b>2006-07</b> | <b>2007-08</b> | <b>2008-09</b> | <b>2009-10</b> | <b>2010-11</b> |
|-----------------------|----------------|----------------|----------------|----------------|----------------|----------------|
| <b>State</b>          | <b>66%</b>     | <b>67%</b>     | <b>68%</b>     | <b>67%</b>     | <b>63%</b>     | <b>57%</b>     |
| <b>CE &amp; Other</b> | <b>24%</b>     | <b>24%</b>     | <b>25%</b>     | <b>22%</b>     | <b>24%</b>     | <b>22%</b>     |
| <b>Federal</b>        | <b>10%</b>     | <b>9%</b>      | <b>7%</b>      | <b>11%</b>     | <b>13%</b>     | <b>21%</b>     |





# Asheboro City Schools 2012 - 2013 Budget Information Federal Expenditures



 Actual Expenditures

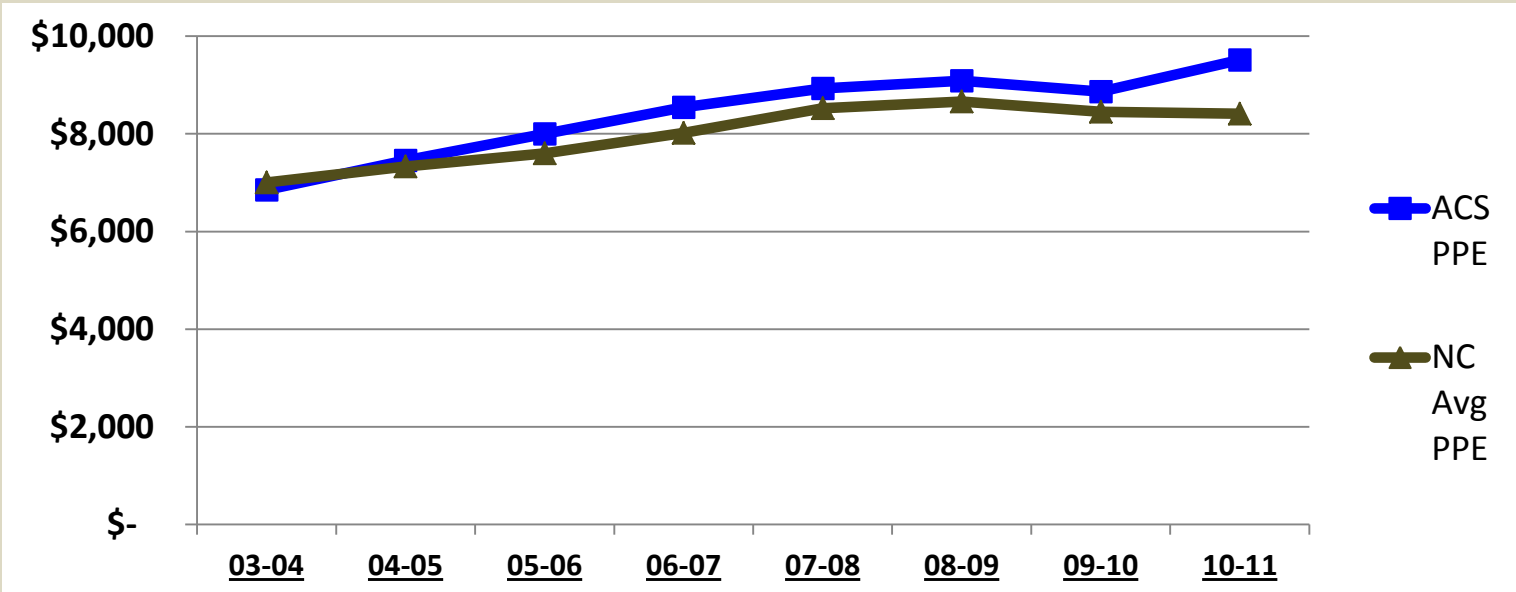
 Projected Expenditures



# Asheboro City Schools

## 2012 - 2013 Budget Information

### Per Pupil Expenditures - Historical Comparison to State



|                 | State     | Federal   | Local     |
|-----------------|-----------|-----------|-----------|
| <b>PPE Rank</b> | <b>68</b> | <b>11</b> | <b>51</b> |

| School Year | ACS PPE  | NC Avg PPE | Rank |
|-------------|----------|------------|------|
| 03-04       | \$ 6,851 | \$ 7,006   | 79   |
| 04-05       | \$ 7,453 | \$ 7,328   | 65   |
| 05-06       | \$ 7,996 | \$ 7,596   | 56   |
| 06-07       | \$ 8,540 | \$ 8,017   | 48   |
| 07-08       | \$ 8,928 | \$ 8,522   | 57   |
| 08-09       | \$ 9,086 | \$ 8,663   | 58   |
| 09-10       | \$ 8,866 | \$ 8,451   | 60   |
| 10-11       | \$ 9,514 | \$ 8,414   | 38   |



**Asheboro City Schools**  
**2012 - 2013 Budget Information**  
**Supplemental Tax Rate and Revenue**

| Year    | Rate  | Actual Revenue | Change       |
|---------|-------|----------------|--------------|
| 1998-99 | 14.50 | \$ 2,159,716   |              |
| 1999-00 | 14.50 | \$ 2,201,127   | \$ 41,411    |
| 2000-01 | 14.50 | \$ 2,289,680   | \$ 88,553    |
| 2001-02 | 13.85 | \$ 2,709,416   | \$ 419,736   |
| 2002-03 | 13.85 | \$ 2,562,821   | \$ (146,595) |
| 2003-04 | 13.85 | \$ 2,566,637   | \$ 3,816     |
| 2004-05 | 13.85 | \$ 2,588,457   | \$ 21,820    |
| 2005-06 | 13.85 | \$ 2,609,756   | \$ 21,299    |
| 2006-07 | 13.85 | \$ 2,637,810   | \$ 28,054    |
| 2007-08 | 13.85 | \$ 2,918,933   | \$ 281,123   |
| 2008-09 | 13.85 | \$ 2,950,694   | \$ 31,761    |
| 2009-10 | 13.85 | \$ 2,929,124   | \$ (21,570)  |
| 2010-11 | 13.85 | \$ 2,869,018   | \$ (60,106)  |

\$.01/100 increase in tax rate equals approximately \$210,000



**Asheboro City Schools**  
**2012 - 2013 Budget Information**  
**County Current Expense Appropriation**

| <b>Year</b> | <b>Amount</b> | <b>Difference</b> | <b>% Change</b> |
|-------------|---------------|-------------------|-----------------|
| 2000-01     | \$ 2,442,726  | \$ 112,543        |                 |
| 2001-02     | \$ 2,783,841  | \$ 341,115        | 14%             |
| 2002-03     | \$ 2,783,841  | \$ -              | 0%              |
| 2003-04     | \$ 2,957,368  | \$ 173,527        | 6%              |
| 2004-05     | \$ 3,331,558  | \$ 374,190        | 13%             |
| 2005-06     | \$ 3,612,250  | \$ 280,692        | 8%              |
| 2006-07     | \$ 3,802,481  | \$ 190,231        | 5%              |
| 2007-08     | \$ 3,760,242  | \$ (42,239)       | -1%             |
| 2008-09     | \$ 4,006,130  | \$ 245,888        | 7%              |
| 2009-10     | \$ 4,419,906  | \$ 413,776        | 10%             |
| 2010-11     | \$ 4,291,642  | \$ (128,264)      | -3%             |
| 2011-12     | \$ 4,367,466  | \$ 75,824         | 2%              |



**Asheboro City Schools**  
**2012 - 2013 Budget Information**  
**County Capital Outlay Expense Appropriation**

| <b>Year</b> | <b>Amount</b> | <b>Difference</b> | <b>% Change</b> |
|-------------|---------------|-------------------|-----------------|
| 2000-01     | \$ 774,732    |                   |                 |
| 2001-02     | \$ 762,460    | \$ (12,272)       | -2%             |
| 2002-03     | \$ 755,177    | \$ (7,283)        | -1%             |
| 2003-04     | \$ 803,552    | \$ 48,375         | 6%              |
| 2004-05     | \$ 817,983    | \$ 14,431         | 2%              |
| 2005-06     | \$ 818,268    | \$ 285            | 0%              |
| 2006-07     | \$ 818,268    | \$ -              | 0%              |
| 2007-08     | \$ 800,937    | \$ (17,331)       | -2%             |
| 2008-09     | \$ 795,174    | \$ (5,763)        | -1%             |
| 2009-10     | \$ 820,243    | \$ 25,069         | 3%              |
| 2010-11     | \$ 803,694    | \$ (16,549)       | -2%             |
| 2011-12     | \$ 813,477    | \$ 9,783          | 1%              |



## Asheboro City Schools 2012 - 2013 Budget Information Full Time Equivalent Positions

| Position                            | State | Federal | Local &<br>Special | CN | Total |
|-------------------------------------|-------|---------|--------------------|----|-------|
| Classroom Teachers                  | 284   | 46      | 9                  |    | 340   |
| Teacher Assistants                  | 80    | 17      | 15                 |    | 112   |
| Office Staff                        | 9     | 10      | 21                 |    | 40    |
| CN Staff - FT/PT                    |       |         |                    | 36 | 36    |
| Custodians                          | 30    |         | 2                  |    | 32    |
| Bus Drivers/Monitors                | 22    | 1       |                    |    | 23    |
| Guidance/Graduation Counselors      | 11    | 1       |                    |    | 12    |
| Exceptional Children Support Staff  | 8     | 3       |                    |    | 11    |
| Assistant Principals <sup>(1)</sup> | 5     | 3       | 3                  |    | 11    |
| Maintenance/Warehouse               |       |         | 10                 |    | 10    |

**Note (1): One assistant principal is paid from the Principal Fellows Program, one is paid from the Piedmont Triad Leadership Academy, one serves the PreK program.**



**Asheboro City Schools  
2012 - 2013 Budget Information  
Full Time Equivalent Positions**

| Position                        | State | Federal | Local &<br>Special | CN | Total |
|---------------------------------|-------|---------|--------------------|----|-------|
| Media Specialists               | 9     |         |                    |    | 9     |
| Principals                      | 8     |         |                    |    | 8     |
| Social Workers/Parent Educators | 1     | 2       | 5                  |    | 8     |
| CN Managers                     |       |         |                    | 8  | 8     |
| Directors                       | 2     |         | 5                  |    | 7     |
| Instructional Facilitators      | 1     | 5       | 1                  |    | 7     |
| Nurses                          | 4     |         | 2                  |    | 6     |
| Supervisors/Coordinators        | 2     | 1       | 1                  |    | 4     |
| Technology Staff                |       |         | 5                  |    | 5     |
| CN Office & Delivery            |       |         |                    | 3  | 3     |
| Assistant Superintendents       | 1     |         | 1                  |    | 2     |
| Daycare Coordinator/Assistants  |       |         | 2                  |    | 2     |
| Superintendent                  | 1     |         |                    |    | 1     |
| Athletic Director               |       |         | 1                  |    | 1     |



**Asheboro City Schools**  
**2012 - 2013 Budget Information**  
**Current Certified Salaries & Benefits - Bachelor's**

| Certification       | Years of Service |                  |                  |
|---------------------|------------------|------------------|------------------|
| Bachelor's          | 0                | 15               | 34               |
| Salary              | \$ 30,430        | \$ 40,180        | \$ 52,550        |
| Supplement - 6.0%   | \$ 1,826         | \$ 2,411         | \$ 3,153         |
| <b>Total Salary</b> | <b>\$ 32,256</b> | <b>\$ 42,591</b> | <b>\$ 55,703</b> |
| Fica                | \$ 2,468         | \$ 3,258         | \$ 4,261         |
| Retirement          | \$ 4,232         | \$ 5,588         | \$ 7,308         |
| Hospital            | \$ 4,930         | \$ 4,930         | \$ 4,930         |
| Dental              | \$ 342           | \$ 342           | \$ 342           |
| <b>Total Cost</b>   | <b>\$ 44,228</b> | <b>\$ 56,709</b> | <b>\$ 72,544</b> |





## Asheboro City Schools 2012 - 2013 Budget Information

### Current Certified Salaries & Benefits - Bachelor's with National Board

| Certification       | Years of Service |                  |                  |
|---------------------|------------------|------------------|------------------|
| Bachelor's w/NBPTS  | 3                | 15               | 34               |
| Salary              | \$ 34,080        | \$ 45,000        | \$ 58,860        |
| Supplement - 6.0%   | \$ 2,045         | \$ 2,700         | \$ 3,532         |
| <b>Total Salary</b> | <b>\$ 36,125</b> | <b>\$ 47,700</b> | <b>\$ 62,392</b> |
| Fica                | \$ 2,764         | \$ 3,649         | \$ 4,773         |
| Retirement          | \$ 4,740         | \$ 6,258         | \$ 8,186         |
| Hospital            | \$ 4,930         | \$ 4,930         | \$ 4,930         |
| Dental              | \$ 342           | \$ 342           | \$ 342           |
| <b>Total Cost</b>   | <b>\$ 48,901</b> | <b>\$ 62,879</b> | <b>\$ 80,623</b> |



**Asheboro City Schools  
2012 - 2013 Budget Information  
Current Certified Salaries & Benefits - Master's**

| Certification       | Years of Service |                  |                  |
|---------------------|------------------|------------------|------------------|
| Master's            | 0                | 15               | 34               |
| Salary              | \$ 33,470        | \$ 44,200        | \$ 57,810        |
| Supplement - 7.0%   | \$ 2,343         | \$ 3,094         | \$ 4,047         |
| <b>Total Salary</b> | <b>\$ 35,813</b> | <b>\$ 47,294</b> | <b>\$ 61,857</b> |
| Fica                | \$ 2,740         | \$ 3,618         | \$ 4,732         |
| Retirement          | \$ 4,699         | \$ 6,205         | \$ 8,116         |
| Hospital            | \$ 4,930         | \$ 4,930         | \$ 4,930         |
| Dental              | \$ 342           | \$ 342           | \$ 342           |
| <b>Total Cost</b>   | <b>\$ 48,524</b> | <b>\$ 62,389</b> | <b>\$ 79,977</b> |



# Asheboro City Schools

## 2012 - 2013 Budget Information

### Current Certified Salaries & Benefits - Master's with National Board

| Certification    | Years of Service |    |    |
|------------------|------------------|----|----|
| Master's w/NBPTS | 3                | 15 | 34 |

|                     |                  |                  |                  |
|---------------------|------------------|------------------|------------------|
| Salary              | \$ 37,490        | \$ 49,500        | \$ 64,750        |
| Supplement - 7.0%   | \$ 2,624         | \$ 3,465         | \$ 4,533         |
| <b>Total Salary</b> | <b>\$ 40,114</b> | <b>\$ 52,965</b> | <b>\$ 69,283</b> |
| Fica                | \$ 3,069         | \$ 4,052         | \$ 5,300         |
| Retirement          | \$ 5,263         | \$ 6,949         | \$ 9,090         |
| Hospital            | \$ 4,930         | \$ 4,930         | \$ 4,930         |
| Dental              | \$ 342           | \$ 342           | \$ 342           |
| <b>Total Cost</b>   | <b>\$ 53,718</b> | <b>\$ 69,238</b> | <b>\$ 88,945</b> |



## Asheboro City Schools 2012 - 2013 Budget Information Budget Projections

|   | Year  | Cost/Rate | Amount         | Difference            |
|---|-------|-----------|----------------|-----------------------|
| <b>Loss of Federal Funding</b>                                  |       |           |                |                       |
| ARRA - Stabilization Funds                                      |       |           | \$ (370,000)   |                       |
| ARRA - Jobs Bill  |       |           | \$ (964,000)   | \$ (1,334,000)        |
| <hr/>   |       |           |                |                       |
| <b>Increase in Discretionary Reduction</b>                      | 11-12 |           | \$ (1,360,000) |                       |
|   | 12-13 |           | \$ (1,595,000) | \$ (235,000)          |
| <hr/>   |       |           |                |                       |
| <b>Hospital Increase</b>  | 11-12 | \$ 4,930  | \$ 761,685     |                       |
|   | 12-13 | \$ 5,192  | \$ 802,164     | \$ (40,479)           |
| <hr/>   |       |           |                |                       |
| <b>Retirement Increase</b>                                      | 11-12 | 13.12%    | \$ 788,709     |                       |
|   | 12-13 | 14.31%    | \$ 860,246     | \$ (71,537)           |
| <hr/>   |       |           |                |                       |
| <b><u>Total projected reduction to the 2012-2013 Budget</u></b> |       |           |                | <b>\$ (1,681,016)</b> |
| <hr/>   |       |           |                |                       |
| <b>Title I Carryover</b>  |       |           |                | \$ 200,000            |
| <b>2011-2012 One-time Expenditures</b>                          |       |           |                | \$ 500,000            |
| <b>Additional Allotment for 2012-2013 Growth</b>                |       |           |                | \$ 300,000            |
| <hr/>   |       |           |                |                       |
| <b><u>Projected Increases to the 2012-2013 Budget</u></b>       |       |           |                | <b>\$ 1,000,000</b>   |
| <hr/>   |       |           |                |                       |
| <b><u>Total Projected Beginning Budget Deficit</u></b>          |       |           |                | <b>\$ (681,016)</b>   |
| <hr/>   |       |           |                |                       |



# **Asheboro City Schools**

## **2012 - 2013 Budget Information**

### **Budget Considerations/Requests**

#### **Asheboro City Schools will produce globally competitive students.**

Reinstate an ESL teacher and add an ESL teacher

Additional team of elementary Art, Music, PE teachers

AVID teacher at Asheboro High School

Reinstate an AIG teacher

Reduce class size

#### **Asheboro City Schools will be led by 21st century professionals.**

Assistant principal to be shared by Lindley Park and Donna Lee Loflin Elementary Schools

Continue Teacher Leadership Academy

Increase the number of elementary instructional facilitators from 3 to 4

Reinstate ESL lead teacher position

#### **Asheboro City Schools will provide a safe and nurturing learning environment.**

Automated external defibrillators (AEDs) for each location



**Asheboro City Schools  
2012 - 2013 Budget Information  
Budget Considerations/Requests**

**Asheboro City Schools facilities will be a point of pride.**

**Early Childhood Development Center Project**

**Activity Bus**

**Adjust band allotment**

**AHS first floor with painting and furniture**

**Construct central technology facility and warehouse**

**Maintenance position**

**Motorize bleachers at North Asheboro Middle School**

**Renovate kitchen at Lindley Park Elementary School**

**Replace chiller towers at Asheboro High School**

**Replace heat pump in theater area at South Asheboro Middle School**

**Replace mower model 4000D**

**Restrooms and concessions at Asheboro High School football stadium**

**Resurface blacktop at elementary schools**

**Roofing projects**

**Security Camera Upgrades**

# Asheboro City Schools Calendar 2012 - 2013

(Calendar with Start Date Waiver and 185 Day Waiver)

| July 2012 |    |    |    |    |    |    |
|-----------|----|----|----|----|----|----|
| S         | M  | T  | W  | T  | F  | S  |
| 1         | 2  | 3  | 4  | 5  | 6  | 7  |
| 8         | 9  | 10 | 11 | 12 | 13 | 14 |
| 15        | 16 | 17 | 18 | 19 | 20 | 21 |
| 22        | 23 | 24 | 25 | 26 | 27 | 28 |
| 29        | 30 | 31 |    |    |    |    |

| August 2012 |    |    |    |    |    |    |
|-------------|----|----|----|----|----|----|
| S           | M  | T  | W  | T  | F  | S  |
|             |    |    | 1  | 2  | 3  | 4  |
| 5           | 6  | 7  | 8  | 9  | 10 | 11 |
| 12          | 13 | 14 | 15 | 16 | 17 | 18 |
| 19          | 20 | 21 | 22 | 23 | 24 | 25 |
| 26          | 27 | 28 | 29 | 30 | 31 |    |

| September 2012 |    |    |    |    |    |    |
|----------------|----|----|----|----|----|----|
| S              | M  | T  | W  | T  | F  | S  |
|                |    |    |    |    |    | 1  |
| 2              | 3  | 4  | 5  | 6  | 7  | 8  |
| 9              | 10 | 11 | 12 | 13 | 14 | 15 |
| 16             | 17 | 18 | 19 | 20 | 21 | 22 |
| 23             | 24 | 25 | 26 | 27 | 28 | 29 |
| 30             |    |    |    |    |    |    |

| October 2012 |    |    |    |    |    |    |
|--------------|----|----|----|----|----|----|
| S            | M  | T  | W  | T  | F  | S  |
|              |    |    |    |    |    |    |
|              | 1  | 2  | 3  | 4  | 5  | 6  |
| 7            | 8  | 9  | 10 | 11 | 12 | 13 |
| 14           | 15 | 16 | 17 | 18 | 19 | 20 |
| 21           | 22 | 23 | 24 | 25 | 26 | 27 |
| 28           | 29 | 30 | 31 |    |    |    |

| November 2012 |    |    |    |    |    |    |
|---------------|----|----|----|----|----|----|
| S             | M  | T  | W  | T  | F  | S  |
|               |    |    |    | 1  | 2  | 3  |
| 4             | 5  | 6  | 7  | 8  | 9  | 10 |
| 11            | 12 | 13 | 14 | 15 | 16 | 17 |
| 18            | 19 | 20 | 21 | 22 | 23 | 24 |
| 25            | 26 | 27 | 28 | 29 | 30 |    |

| December 2012 |    |    |    |    |    |    |
|---------------|----|----|----|----|----|----|
| S             | M  | T  | W  | T  | F  | S  |
|               |    |    |    |    |    | 1  |
| 2             | 3  | 4  | 5  | 6  | 7  | 8  |
| 9             | 10 | 11 | 12 | 13 | 14 | 15 |
| 16            | 17 | 18 | 19 | 20 | 21 | 22 |
| 23            | 24 | 25 | 26 | 27 | 28 | 29 |
| 30            | 31 |    |    |    |    |    |

| July |         |
|------|---------|
| 4    | Holiday |

| August       |                          |
|--------------|--------------------------|
| 15           | Staff Reports            |
| 16           | Professional Development |
| 15,17, 20,21 | Workdays                 |
| 22           | First day for students   |

| September |         |
|-----------|---------|
| 3         | Holiday |

| October |                          |
|---------|--------------------------|
| 4       | Professional Development |
| 5       | Workday                  |

| November |         |
|----------|---------|
| 12       | Holiday |
| 21       | Workday |
| 22-23    | Holiday |

| December   |                       |
|------------|-----------------------|
| 21         | Vacation/Annual Leave |
| 24-26      | Holiday               |
| 27, 28, 31 | Vacation/Annual Leave |

| January |                          |
|---------|--------------------------|
| 1, 21   | Holiday                  |
| 17      | Professional Development |
| 18      | Workday                  |

| February |                       |
|----------|-----------------------|
| 18       | Vacation/Annual Leave |

| March |                          |
|-------|--------------------------|
| 8     | Professional Development |
| 29    | Holiday                  |

| April |                          |
|-------|--------------------------|
| 1-5   | Vacation/Annual Leave    |
| 26    | Professional Development |

| May |         |
|-----|---------|
| 27  | Holiday |

| June  |                       |
|-------|-----------------------|
| 7     | Last Day for Students |
| 10-11 | Workdays              |

|                          |
|--------------------------|
| Holidays                 |
| Teacher Workdays         |
| Required Workdays        |
| Vacation/Annual Leave    |
| Mandatory Prof. Develop. |

| January 2013 |    |    |    |    |    |    |
|--------------|----|----|----|----|----|----|
| S            | M  | T  | W  | T  | F  | S  |
|              |    | 1  | 2  | 3  | 4  | 5  |
| 6            | 7  | 8  | 9  | 10 | 11 | 12 |
| 13           | 14 | 15 | 16 | 17 | 18 | 19 |
| 20           | 21 | 22 | 23 | 24 | 25 | 26 |
| 27           | 28 | 29 | 30 | 31 |    |    |

| February 2013 |    |    |    |    |    |    |
|---------------|----|----|----|----|----|----|
| S             | M  | T  | W  | T  | F  | S  |
|               |    |    |    |    | 1  | 2  |
| 3             | 4  | 5  | 6  | 7  | 8  | 9  |
| 10            | 11 | 12 | 13 | 14 | 15 | 16 |
| 17            | 18 | 19 | 20 | 21 | 22 | 23 |
| 24            | 25 | 26 | 27 | 28 |    |    |

| March 2013 |    |    |    |    |    |    |
|------------|----|----|----|----|----|----|
| S          | M  | T  | W  | T  | F  | S  |
|            |    |    |    |    | 1  | 2  |
| 3          | 4  | 5  | 6  | 7  | 8  | 9  |
| 10         | 11 | 12 | 13 | 14 | 15 | 16 |
| 17         | 18 | 19 | 20 | 21 | 22 | 23 |
| 24         | 25 | 26 | 27 | 28 | 29 | 30 |
| 31         |    |    |    |    |    |    |

| April 2013 |    |    |    |    |    |    |
|------------|----|----|----|----|----|----|
| S          | M  | T  | W  | T  | F  | S  |
|            |    |    |    |    |    |    |
|            | 1  | 2  | 3  | 4  | 5  | 6  |
| 7          | 8  | 9  | 10 | 11 | 12 | 13 |
| 14         | 15 | 16 | 17 | 18 | 19 | 20 |
| 21         | 22 | 23 | 24 | 25 | 26 | 27 |
| 28         | 29 | 30 |    |    |    |    |

| May 2013 |    |    |    |    |    |    |
|----------|----|----|----|----|----|----|
| S        | M  | T  | W  | T  | F  | S  |
|          |    |    | 1  | 2  | 3  | 4  |
| 5        | 6  | 7  | 8  | 9  | 10 | 11 |
| 12       | 13 | 14 | 15 | 16 | 17 | 18 |
| 19       | 20 | 21 | 22 | 23 | 24 | 25 |
| 26       | 27 | 28 | 29 | 30 | 31 |    |

| June 2013 |    |    |    |    |    |    |
|-----------|----|----|----|----|----|----|
| S         | M  | T  | W  | T  | F  | S  |
|           |    |    |    |    |    | 1  |
| 2         | 3  | 4  | 5  | 6  | 7  | 8  |
| 9         | 10 | 11 | 12 | 13 | 14 | 15 |
| 16        | 17 | 18 | 19 | 20 | 21 | 22 |
| 23        | 24 | 25 | 26 | 27 | 28 | 29 |
| 30        |    |    |    |    |    |    |